

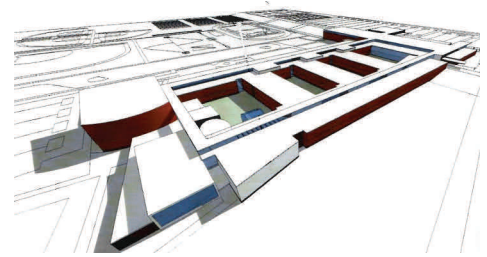
# OSWEGO HIGH SCHOOL #3

---

## *Project Status*

(112 Acres) 3,000 Student High school

Preliminary Engineering, Approved Annexation Agreement by Village of Plainfield, Approved Site Plan by Village of Plainfield. Work completed Spring 2011.



## *Scope*

- TOPO Survey
- ALTA Survey
- Drain Tile Investigation
- Phase I & II Environmental Site Assessment
- Illinois Historic Preservation Agency Inquiry
- Wetland Delineation & Opinion Letter
- Subdivision Plat
- Traffic Study
- Annexation Plat
- Land Planning
- Landscape Architecture
- Coordination with Architect
- Civil Engineering (Preliminary)
  - ⇒ Geometric Plans for on-site and Offsite improvements
  - ⇒ Stormwater management design
  - ⇒ Grading of parking lots, stormwater management and athletic fields

## *Client*

Oswego Community School District #308

## *References*

Dr. Dan O'Donnell—Superintendent

PH: 630-636-3080

Mike Barr— Construction Supervision

PH: 630-688-2829

Doug Gallios—Former Director of Construction  
Currently with Winfield School Dist. 34

PH: 630-909-4905

## *Budget & Schedule*

- Adherence to Budget was in-line with project estimate.
- Adherence to Schedule was in-line with timeline provided.

## *Change Orders*

Add Environmental Site Assessment Phase II based on results of Phase I